



ARID

Arnold Reception Desks, Inc.


Courtroom Furniture

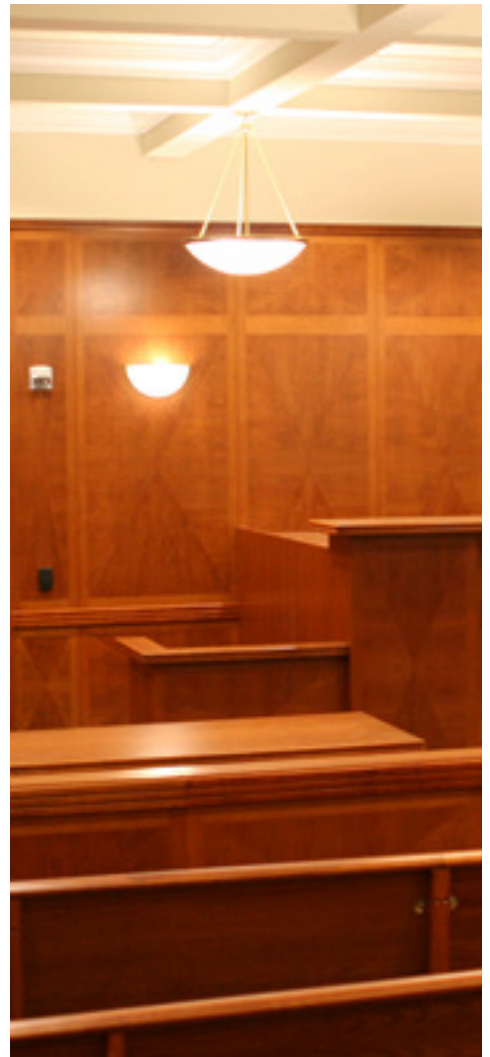
Arnold Reception Desks, established in 1989, is the premier manufacturer of reception desks in the Eastern US, with a broad and varied selection of price points, styles and materials.

In 1999 ARD introduced a collection of free-standing, modular courtroom furniture that is unique in its durability, convenience, and flexibility.



Table of Contents:

- 4 Standard courtroom components
- 6 Judge's Benches, Witness Stands and Court Reporter Desks
- 7 Jury Boxes and Courtroom Dividers
- 8 Legal lecterns
- 9 Attorney Tables
- 10 Council Chambers
- 11 Schools
- 12 Hearing Rooms
- 13 Custom
- 14 Design and Fabrication
- 15 Installation
- 15  Custom installations



Standard Courtroom Modules

ARD Courtroom modules include:

- Judge's benches with wood platforms that serve as cableways.
- Witness stands and clerk desks.
- 4 types of attorney tables with a choice of worksurface materials, and cabling options.
- A modular jury box system that can be manufactured in many sizes and configurations.
- A line of legal lecterns from simple podiums to complex AV command centers that house a variety of electronic equipment.
- Mobile or fixed courtroom dividers or rails.



Typical courtroom modules in a **Contemporary style**.
with solid wood molding on counters, caps and worksur-
faces, with kerf reveal around base



Typical courtroom modules in a **Traditional style**., with applied picture frame molding and solid wood plinth base.



Typical courtroom modules in the **Kent style** featuring solid wood raised panels. .

Judge's Benches

Judge's benches are available as free-standing modules or as the main part of an ensemble that includes witness stand and court reporter desk, like that shown at right. Platforms come standard at 6" high but can be made 12" or 18" high. Platforms feature integrated cableways below the deck.



Witness stands and court reporter desks



Standard Witness stands feature a high modesty panel and an 18" deep worksurface. This one is in the Kent style, with solid wood raised panels.



The court reporter desk, above, was designed by Martin Gruen of Center for Court and Legal Technology, to respond to the needs of the present day court reporter, who often needs a computer and whose transcription of the proceedings can be read on monitors in the courtroom.

Jury Boxes and Dividers

ARD recently added jury boxes, courtroom dividers, and legal lecterns to its collection of modular courtroom furniture.



The jury box above was built for a US Navy courtroom in Naples Italy, and is the Kent style, with solid wood raised panels. It features a platform in the front row and a higher platform in the back row, both of which will be carpeted in the field, and have removable plywood decks and integrated cableways through the joists.

Many courtroom employ rails or dividers to separate the courtroom area from the public area. ARD offers fixed courtroom dividers, or mobile ones on casters like the one at right, designed for a Navy Courtroom in Spain, that has a hinged gate.



Legal Lecterns

The lectern can be a pivotal unit in the modern courtroom, where it often serves as the command post for various monitors and screens.



The lectern at the left is a simple lectern with a laptop pull-out shelf at ADA height.

The legal lectern below is part of the McGlothlin courtroom at the CLCT, and is fully wired for fiber optic cable. It is designed to accommodate document cameras, laptops, DVD players, LCD monitors, a microphone, and other specialized equipment..



Attorney Tables



Attorney tables can be simple wood units with 4 corner legs or modesty panel....



...or they can be complex units that form an integral part of the modern wired courtroom.

These attorney tables were designed by James Puskuldjian of the US District Court in NYC for trials of special defendants. They include elaborate cableways, and can be ganged together to form wider desks.

The caisson style hollow panel leg has a door that can be removed to facilitate cabling, flaps over the cable well on the top, and U-bolts to which prisoners can be shackled.



Council Chamber furniture

Council chamber furniture are a subset of our courtroom furniture. Many municipalities have a multi-purpose room that serves as courtroom, commission chamber, and hearing room. Our courtroom furniture can offer many attractive solutions



The contemporary unit above was built for a NJ township and is based on our Concord series reception desk. The unit below shows a more traditional approach.



School Courtrooms

ARD has provided courtroom furniture to many secondary schools. The courtroom above is in Birdville TX. The judge's bench features a wheel chair ramp going to the judge's bench platform.



Hearing Rooms

Administrative hearing rooms provide another area for our courtroom modules. ARD has provided hearing room furniture for the SEC, and the Social Security Administra-



This ensemble was designed by Martin Gruen of Center for Legal and Court Technology for the Office of Disability Adjudication and Review of the Social Security Administration.



Special hearing room furniture for the Department of Energy for a Federal building in Nevada. The curved judge's bench has full bulletproofing in the center section., and the litigants tables were bolted to the floor.

Custom

ARD courtroom modules are easily modified. The US District Court for the Southern District of NY needed furniture for a magistrate courtroom in Middletown NY and chose the modular furniture of ARD over built-in millwork. The building is leased and the courtroom and its contents can be moved and reinstalled in a new location. Even the wall paneling can be easily relocated.

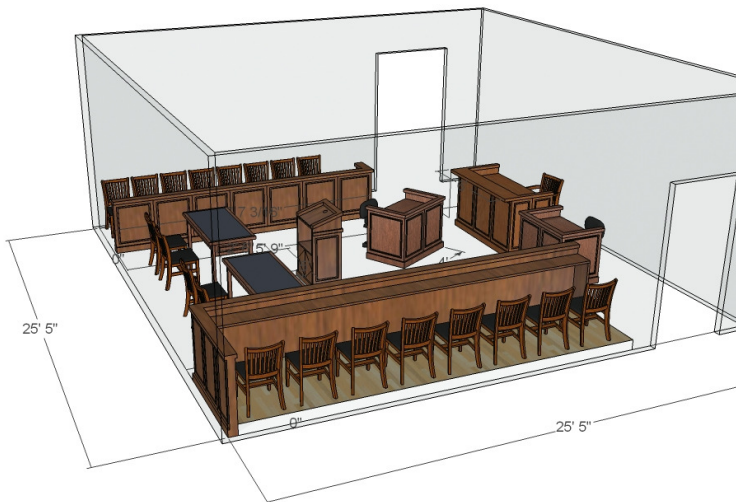
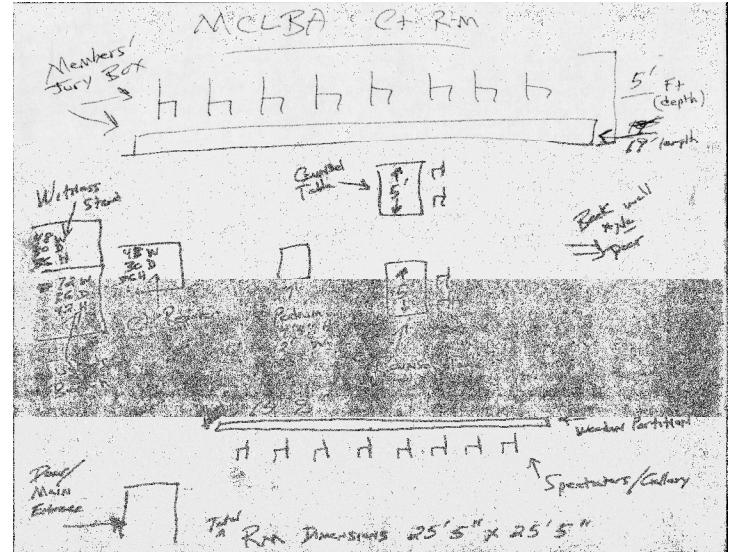


The Center for Legal and Courtroom Technology, based at the Marshall Wyeth Law School of William and Mary selected ARD to help to renovate the McGlothlin courtroom, the most high tech courtroom in the world. ARD also provided and installed the custom paneling at the rear of the judges' bench.

Design and Fabrication

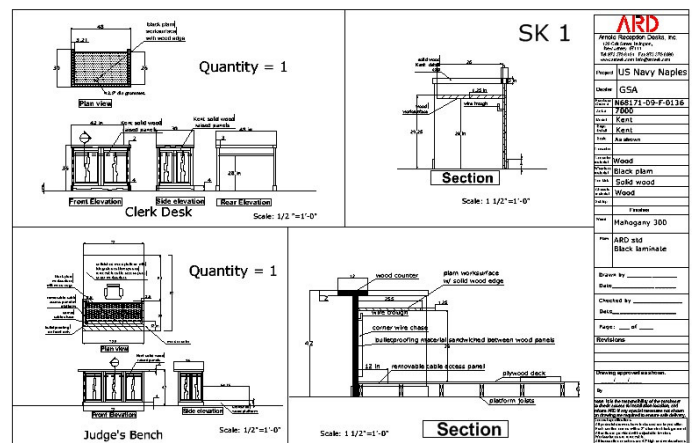
ARD is able to provide assistance with the design and layout of your courtroom. Given the size of the room, the quantity and style of the components, we can work up conceptual renderings that help visualize the finished product.

We can work with rough layouts like that shown at the right, sent from a Marine Corps Logistics base in Georgia.



From that we work up a scale rendering in Sketchup, that gives the enduser a good idea of how the finished courtroom will look like.

These renderings can be exported as dwg files and inserted into architectural plans, and also serve as the basis of our CAD type shop drawings.



Installation

ARD courtroom furniture is distinguished from millwork by the fact that our units are entirely finished and pre-assembled at the factory. Installation in the field is relatively quick and easy. Furthermore, our units can be disassembled and relocated if necessary.

Experienced furniture installers are able to install these units quickly and easily. Installation by trained factory technicians is available in most of the continental US.

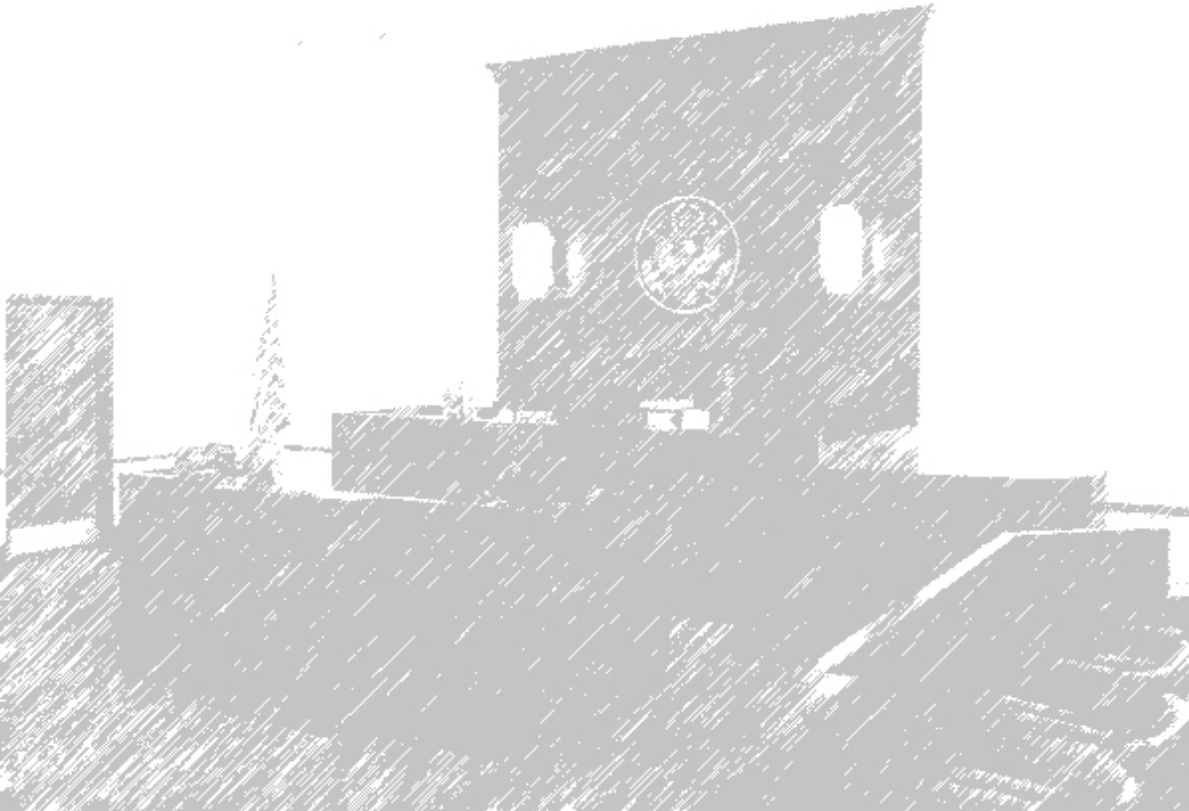


View of renovated courtroom for Center for Legal and Courtroom Technology at the Marshall Wythe School of Law at William and Mary. ARD installed the paneling and the integrated bench, witness box, translator desk ensemble in 2009.



ARD was awarded a GSA contract in 2000, which covers its modular courtroom furniture. These modules can be found on GSA Advantage!

Visit our website at www.ardesk.com.



Arnold Reception Desks, Inc.

120 Coit Street Irvington NJ, 07111 800 360 0076 www.ardesk.com

Info@ardesk.com